

Philanthropic Pathways

This infographic shows different pathways a donor can take when giving. Some choose one, a combination, or change pathways over time.

Here is an overview of the process:

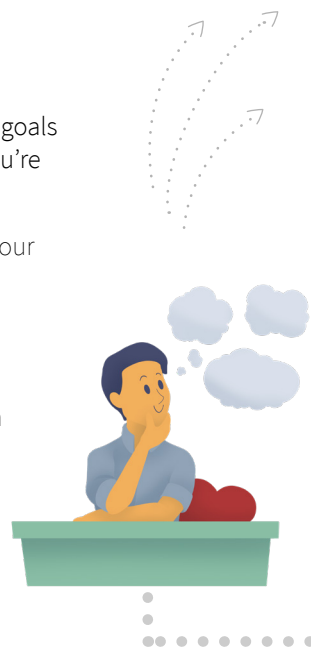
- Start by reflecting and learning about your values, goals, and priority funding areas
- Find effective organizations by: doing your own research, following other funders, or collaborating with others
- No matter which route you take—give!

Effective philanthropists continually assess and reflect. They recognize their role in the larger community and remain humble. They listen, learn, respect, and trust.

Assess

Reflect annually on your goals and the organizations you're supporting.

- Listen and learn about your grantees' successes and challenges
- Invite feedback from grantees about how you can better support them



Reflect

Having clearly articulated motivations and values helps you develop a strategy, communicate with others, find aligned organizations, and know when to say "no." Create a focus statement to anchor your giving, and consider whether to include family, community leaders, or beneficiaries in your giving.

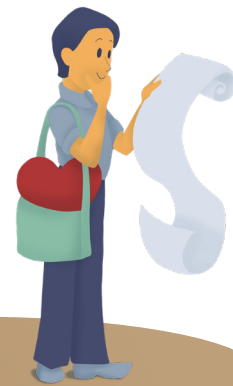


Learn

Explore the history of the problem, challenges facing impacted communities, and the variety of approaches to addressing the issues.

Solo Discovery

Through online research, networking, or a landscape analysis, identify organizations aligned with your goals and causes.



Follow Other Funders

Follow the recommendations of others who have already identified outstanding organizations working in your priority areas.



Collaborative Discovery

Consider giving with others to learn along the way and increase impact by:

- Involving community members or other beneficiaries
- Donating to pooled funding opportunities
- Joining a giving circle



Give

Start funding! View your gift as the beginning of a relationship.



- When possible, give multi-year, unrestricted support
- Develop a trusting relationship with your grantees
- Consider what you can offer beyond the dollars: time, talent, and social ties



The Stanford Center on Philanthropy and Civil Society (PACS) is a global interdisciplinary research center and publisher of Stanford Social Innovation Review (SSIR). The Effective Philanthropy Learning Initiative at Stanford PACS conducts research, develops resources, and teaches to help donors become more effective, strategic philanthropists.

www.pacscenter.stanford.edu/epli